



SAI SharePoint
Academy.ir

Learn as an Academic, Work as a Professional

SharePoint Developer Basic



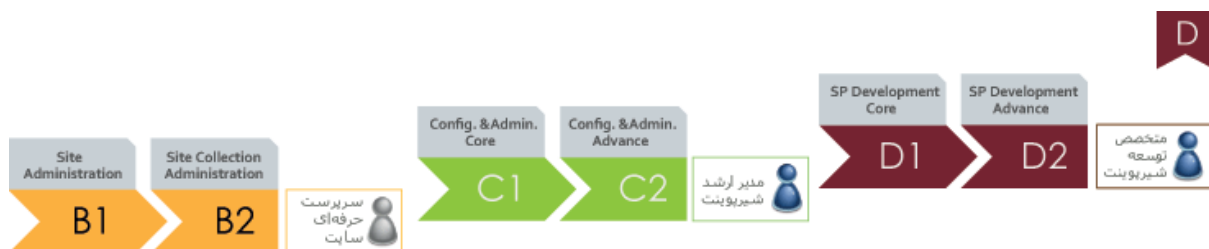
عنوان تخصص: متخصص توسعه شیریپونت

عنوان دوره: توسعه شیریپونت – مقدماتی

شناسنامه دوره:

نوع:	دوره آموزشی
مدت زمان دوره	۱۸ (ساعت)
تعداد جلسات	۶ (جلسه)
مدت هر جلسه آموزشی	۳ (ساعت)
مخاطب:	طراحان فرم و گردش کار
سطح دوره	پیشرفته
نسخه نرم افزار:	SharePoint 2013 Server
نوع تدریس:	مدرس در کلاس آموزشی به همراه کارگاه حین دوره

درباره این دوره:



مخاطب دوره:

مخاطب این دوره فردی است که قصد دارد پس از درک و شناخت مناسب از امکانات و توانمندیهای شیرپوینت، در یک قالب صحیح نسبت به توسعه امکانات شیرپوینت در چهارچوب آن اقدام نماید.

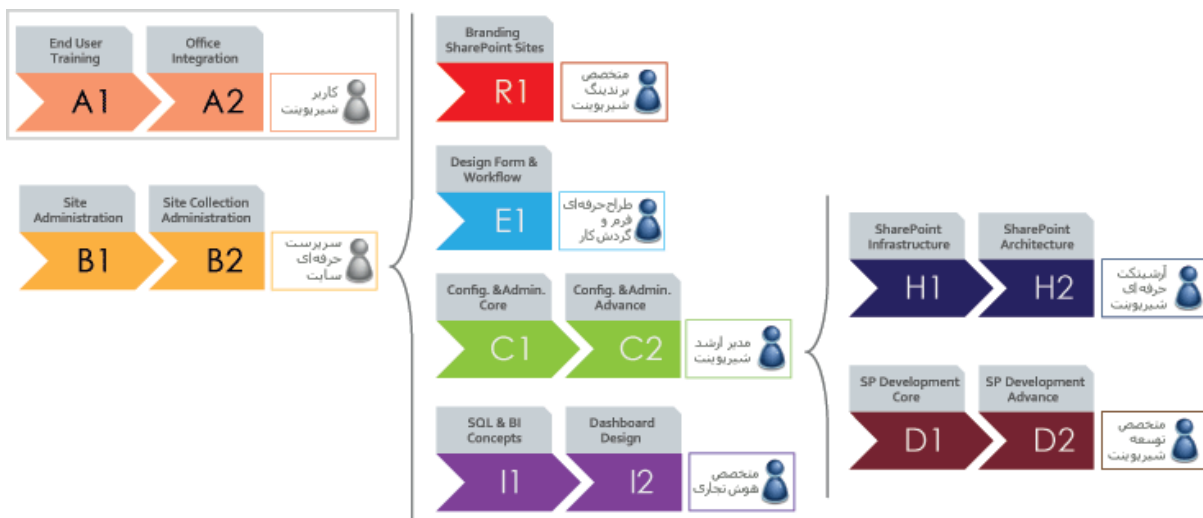
پیش نیاز:

- داشتن تخصص سرپرست حرفه ای سایت (B1,B2)
- داشتن تخصص مدیر ارشد شیرپوینت (C1,C2)
- آشنایی کلی با برنامه نویسی Visual Studio.Net
- تسلط کافی به محیط و امکانات شیرپوینت

مدت دوره:

- ۱۸ ساعت: ۶ جلسه آموزشی ۳ ساعته

مسیر کلی آموزشی آکادمی شیرپوینت ایران



SharePoint Development- Core

Module1: SharePoint as a Developer Platform

- Introducing the SharePoint Developer Landscape
- Choosing Approaches to SharePoint Development
- Understanding SharePoint 2013 Deployment and Execution Models

Lab: Comparing Web Parts and App Parts

After completing this module, students will be able to:

- Describe the opportunities for developers in SharePoint Server 2013.
- Choose appropriate execution models for custom SharePoint components.
- Choose appropriate deployment models for custom SharePoint components.

Module 2: Working with SharePoint Objects

This module introduces the server-side SharePoint object model and how the core classes relate to sites and collections. The server-side SharePoint object model provides a core set of classes that represent different items in the logical architecture of a SharePoint deployment. Students also learn how manage permissions for server-side code.

Lessons

- Understanding the SharePoint Object Hierarchy
- Working with Sites and Webs
- Working with Execution Contexts

Lab: Working with Sites and Webs

Lab: Working with Execution Contexts

After completing this module, students will be able to:

- Explain the purpose of key classes in the server-side SharePoint object model.
- Programmatically interact with SharePoint site collections and sites.
- Adapt solutions for users with different levels of permissions.

Module 3: Working with Lists and Libraries

This module explains how to interact with lists and libraries. Students learn about how to work with lists and libraries programmatically using the server-side SharePoint object model and how to use query classes and LINQ to SharePoint to query and retrieve data from SharePoint lists. Student also learn how to efficiently work with lists that contain large numbers of items.

Lessons

- Using List and Library Objects
- Querying and Retrieving List Data
- Working with Large Lists

Lab: Querying and Retrieving List Data

Lab: Working with Large Lists

After completing this module, students will be able to:

- Interact with lists and libraries programmatically.
- Query and retrieve list data.
- Perform operations efficiently on large lists.

Module 4: Designing and Managing Features and Solutions

This module examines creating and deploying custom Developing a SharePoint solutions and features. The students also learn how and when to use sandbox solutions.

Lessons

- Understanding Features and Solutions
- Configuring Features and Solutions
- Working with Sandboxed Solutions

Lab: Working with Features and Solutions

After completing this module, students will be able to:

- Explain the purpose and key functionality of Features and solutions.
- Configure and manage Features and solutions.
- Create and manage sandboxed solutions.

Module 5: Working with Server-Side Code

This module describes how to develop and deploy Web Parts and event receivers in a solution.

Lessons

- Developing Web Parts
- Using Event Receivers
- Using Timer Jobs
- Storing Configuration Data

Lab: Working with Server-Side Code

After completing this module, students will be able to:

- Describe the process for developing a web part.
- Use event receivers to handle SharePoint events.
- Use timer jobs to perform out of process, and scheduled operations.
- Store and manipulate configuration data for custom components.

Module 6: Managing Identity and Permissions

This module describes how manage permissions through code and customize authentication using custom claims providers.

Lessons

- Understanding Identity Management in SharePoint 2013
- Managing Permissions in SharePoint 2013
- Configuring Forms-Based Authentication
- Customizing the Authentication Experience

Lab: Managing Permissions Programmatically in SharePoint 2013

Lab: Creating and Deploying a Custom Claims Provider

After completing this module, students will be able to:

- Describe how authentication and identity management work in SharePoint 2013.
- Verify and manage permissions programmatically in SharePoint 2013.
- Create and configure custom membership providers and role managers for forms-based authentication.
- Create claims providers and customize the sign-in experience.

Module 7: Introducing Apps for SharePoint

This module introduces the SharePoint App, a new way to customize SharePoint functionality with SharePoint Server 2013.

Lessons

- Overview of Apps for SharePoint
- Developing Apps for SharePoint

Lab: Creating a Site Suggestions App

After completing this module, students will be able to:

- Describe SharePoint apps and compare them to SharePoint farm solutions and sandboxed solutions.
- Describe how to develop apps for SharePoint 2013 that work on-premises and in the cloud.

Learn as an Academic, Work as a Professional