



SAI SharePoint
Academy.ir

Learn Academically, Do Professionally

SharePoint Development- Advance

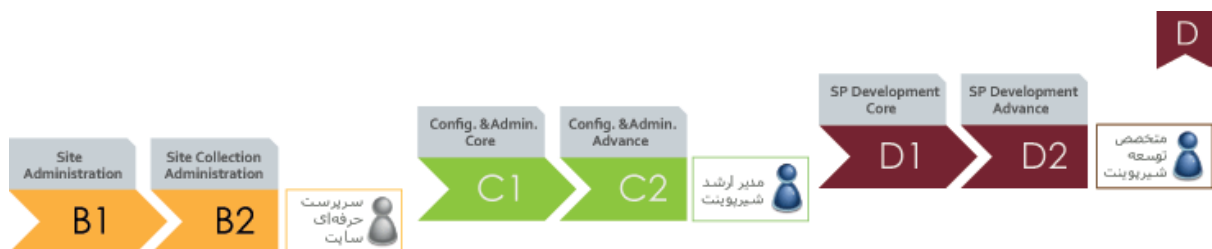
عنوان تخصص: متخصص توسعه شریپوینت

عنوان دوره: توسعه شریپوینت – پیشرفته

شناسنامه دوره:

نوع:	دوره آموزشی
مدت زمان دوره	۱۸ (ساعت)
تعداد جلسات	۶ (جلسه)
مدت هر جلسه آموزشی	۳ (ساعت)
مخاطب:	طراحان فرم و گردش کار
سطح دوره	پیشرفته
نسخه نرم افزار:	SharePoint 2013 Server
نوع تدریس:	مدرس در کلاس آموزشی به همراه کارگاه حین دوره

درباره این دوره:



مخاطب دوره:

مخاطب این دوره فردی است که قصد دارد پس از درک و شناخت مناسب از امکانات و توانمندیهای شیرپوینت، در یک قالب صحیح نسبت به توسعه امکانات شیرپوینت در چهارچوب آن اقدام نماید.

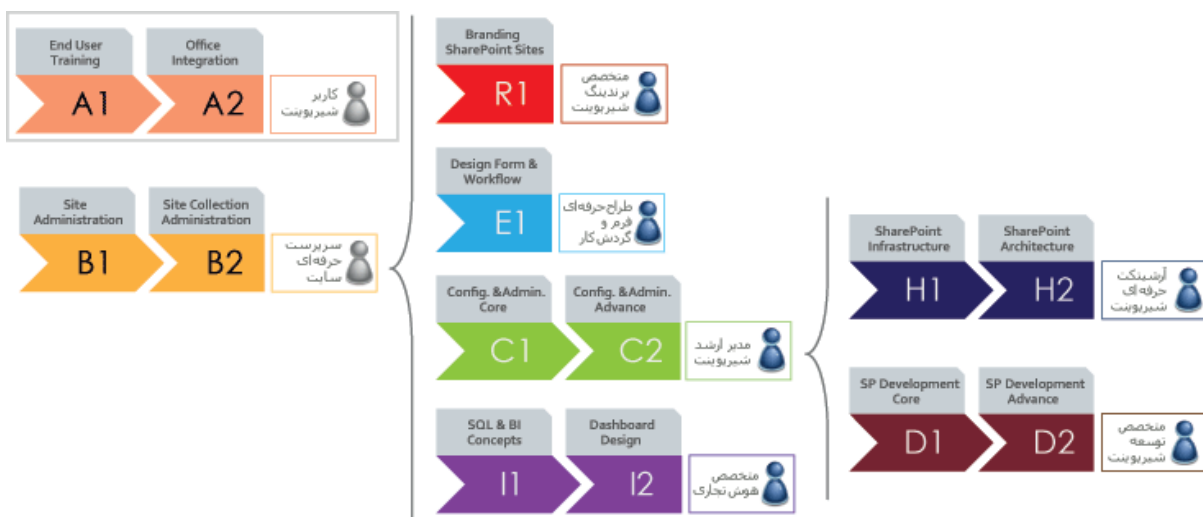
پیش نیاز:

- داشتن تخصص سرپرست حرفه ای سایت (B1,B2)
- داشتن تخصص مدیر ارشد شیرپوینت (C1,C2)
- آشنایی کلی با برنامه نویسی Visual Studio.Net
- گذراندن دوره D1

مدت دوره:

- ۱۸ ساعت: ۶ جلسه آموزشی ۳ ساعته

مسیر کلی آموزشی آکادمی شیرپوینت ایران



SharePoint Development- Advance

Module 8: Client-Side SharePoint Development

This module describes how to use JavaScript Client Object Model (CSOM), managed code CSOM and the REST API to build SharePoint Apps.

Lessons

- Using the Client-Side Object Model for Managed Code
- Using the Client-Side Object Model for JavaScript
- Using the REST API with JavaScript

Lab: Using the Client-Side Object Model for Managed Code

Lab : Using the REST API with JavaScript

After completing this module, students will be able to:

- Use the client-side object model for managed code to interact with a SharePoint deployment.
- Use the client-side object model for JavaScript to interact with a SharePoint deployment.
- Use the REST API with JavaScript or C# to interact with a SharePoint deployment.

Module 9: Developing Remote Hosted SharePoint Apps

This module examines the difference between provider hosted Apps and Remote Hosted Apps. The students will also create and deploy a Provider Hosted App.

Lessons

- Overview of Remote Hosted Apps
- Configuring Remote Hosted Apps
- Developing Remote Hosted Apps

Lab: Configuring a Provider Hosted SharePoint App

Lab: Developing a Provider Hosted SharePoint App

After completing this module, students will be able to:

- Describe how remote-hosted apps work and how to configure the permissions and cross-domain calls that they may require.
- Configure apps for hosting on Windows Azure or remote servers.
- Develop apps for hosting on Windows Azure or remote servers.

Module 10: Publishing and Distributing Apps

This module introduces the App Catalog so users to locate, purchase, and install apps easily. The students learn how to package and publish Apps to the App Catalog.

Lessons

- Understanding the App Management Architecture
- Understanding App Packages
- Publishing Apps
- Installing, Updating, and Uninstalling Apps

Lab: Publishing an App to a Corporate Catalog

Lab: Installing, Updating, and Uninstalling Apps

After completing this module, students will be able to:

- Explain how SharePoint manages app publishing and distribution.
- Describe the contents of an app package.
- Publish apps to a corporate catalog or the Office Marketplace.
- Install, update, and uninstall apps.

Module 11: Automating Business Processes

This module explains how to create workflows and workflow actions using Visio 2013, SharePoint Designer 2013 and Visual Studio 2012. Lessons

- Understanding Workflow in SharePoint 2013
- Building Workflows by using Visio 2013 and SharePoint Designer 2013

- Developing Workflows in Visual Studio 2012

Lab: Building Workflows in Visio 2013 and SharePoint Designer 2013

Lab: Creating Workflow Actions in Visual Studio 2012

At the end of this module, student will be able to:

- Describe the architecture and capabilities of workflow in SharePoint 2013.
- Create declarative workflows in Visio 2013 and SharePoint Designer 2013.
- Create and deploy custom workflows by using Visual Studio 2012.

Module 12: Managing Taxonomy

This module explains the importance of a good taxonomy in SharePoint and working with the components of the taxonomy. The students also see how to tie event receivers to the taxonomy.

Lessons

- Managing Taxonomy in SharePoint 2013
- Working with Content Types
- Working with Advanced Features of Content Types

Lab: Working with Content Types

Lab: Working with Advanced Features of Content Types

After completing this module, student will be able to:

- Work with taxonomy building blocks in SharePoint 2013.
- Create and configure content types declaratively and programmatically.
- Work with advanced features of content types.

Module 13: Managing Custom Components and Site Life Cycles

This module explains how you can create custom component definitions and templates, which enable you to deploy custom sites, lists and other components across a farm.

Lessons

- Defining Custom Lists
- Defining Custom Sites
- Managing SharePoint Sites

Lab: Managing Custom Components and Site Life Cycles

After completing this module, students will be able to:

- Define and provision custom lists
- Define and provision custom sites.
- Manage the SharePoint site life cycle.

Module 14: Customizing User Interface Elements

This module explains different ways of customizing the SharePoint user interface, such as adding buttons to the ribbon or modifying the appearance of list views.

Lessons

- Working with Custom Actions
- Using Client-Side User Interface Components
- Customizing the SharePoint List User Interface

Lab: Using the Edit Control Block to Launch an App

Lab: Using jQuery to customize the SharePoint List User Interface

After completing this module, students will be able to:

- Use custom actions to modify the SharePoint user interface.
- Use JavaScript to work with client-side SharePoint user interface components.
- Describe how to modify the appearance and behavior of list views and forms.

Module 15: Working with Branding and Navigation

This module explains ways to customize branding, designing, publishing and navigating sites in SharePoint Server 2013. The students also learn how to create devise independent sites standard web technologies, such as HTML, CSS, and JavaScript.

Lessons

- Creating and Applying Themes
- Branding and Designing Publishing Sites
- Tailoring Content to Platforms and Devices
- Configuring and Customizing Navigation

Lab: Branding and Designing Publishing Sites

Lab: Configuring Farm-Wide Navigation

After completing this module, students will be able to:

- Create and apply themes to SharePoint sites.
- Create publishing site design assets such as master pages and page layouts.
- Use device channels and image renditions to adapt content for different devices.
- Configure and customize the navigation experience for publishing sites.

Learn Academically, Do Professionally