



SAI SharePoint
Academy.ir

Learn Academically, Do Professionally

SharePoint Infrastructure

10231B

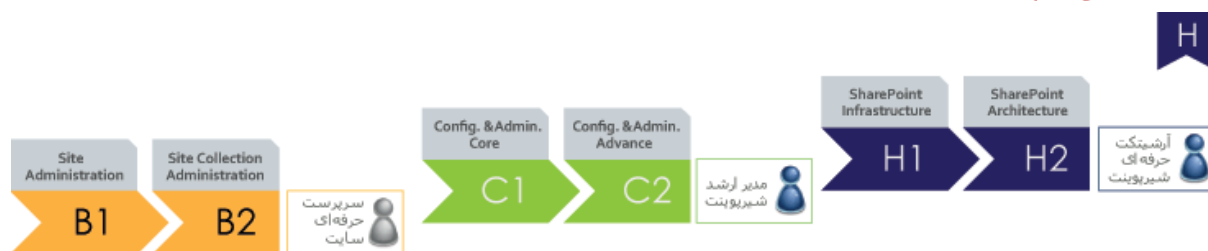
عنوان تخصص: آرشیوتک حرفه ای شیریونت

عنوان دوره: زیرساخت شیریونت

شناسنامه دوره:

دوره آموزشی	نوع:
18 (ساعت)	مدت زمان دوره
6 (جلسه)	تعداد جلسات
3 (ساعت)	مدت هر جلسه آموزشی
طراحان فرم و گردش کار	مخاطب:
پیشرفته	سطح دوره
SharePoint 2013Server	نسخه نرم افزار:
مدرس در کلاس آموزشی به همراه کارگاه حین دوره	نوع تدریس:

درباره این دوره:



مخاطب دوره:

این دوره برای افرادی که شیرپوینت را برای کار تیمی و در مقیاس پروژه های متوسط و بزرگ می خواهند پیاده سازی و مدیریت نمایند طراحی شده است. این افراد می بایست تجربه تئوری و عملی لازم را پیش از این دوره کسب و نموده و در این دوره در مقیاسی بزرگ تر به، مباحث زیرساخت شیرپوینت را درک و دریافت نمایند.

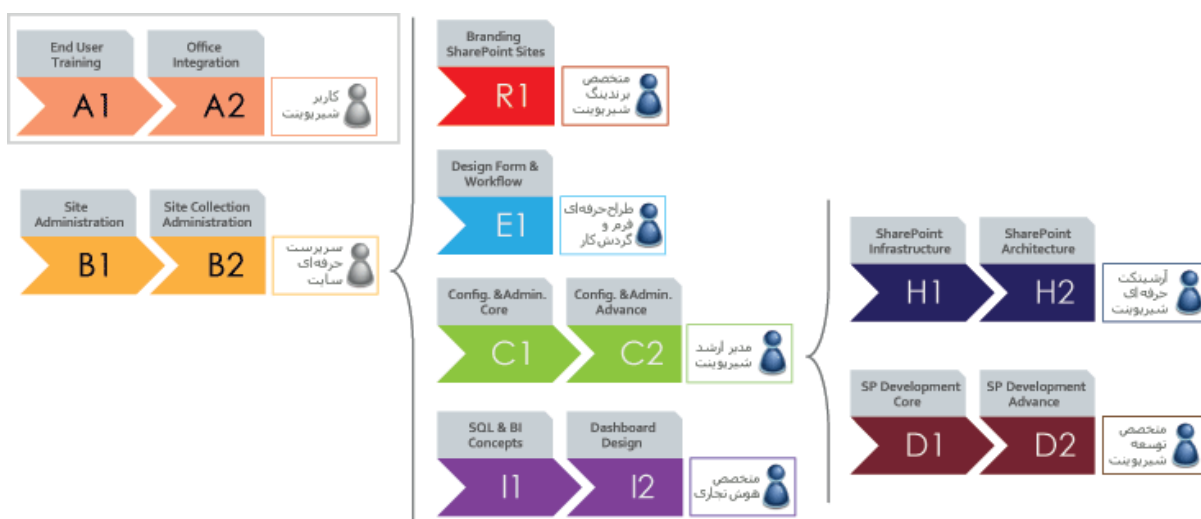
پیش نیاز:

- داشتن تخصص سرپرست حرفه ای سایت (B1,B2)
- داشتن تخصص مدیر ارشد شیرپوینت (C1, C2)
- داشتن تجربه حداقل 2 سال کار عملی پیاده سازی و مدیریت شیرپوینت
- مدیریت، مانیتورینگ، ارتقاء و به روز رسانی و طراحی فارم شیرپوینت
- تجربه عملی کار شبکه و امنیت در حوزه شیرپوینت

مدت دوره:

- 18 ساعت: 6 جلسه آموزشی 3 ساعته

مسیر کلی آموزشی آکادمی شیرپوینت ایران



SharePoint Infrastructure

Module 1: Designing a Logical Architecture

This module describes the function, components, and creation of a logical design and explains why this design is the first stage in any SharePoint 2013 and SharePoint Online solution. This module also covers a general overview of Service Pack 1 implications for SharePoint 2013, and a basic overview of the main functional differences in SharePoint Online.

- Identifying Business Requirements
- Overview of SharePoint 2013 Logical Architecture
- Documenting the Logical Architecture
- Understanding SharePoint Online
- SharePoint 2013 Service Pack 1

Module 2: Planning a Service Application Architecture

This module describes the new service application architecture in SharePoint 2013 and explains how you should plan to deploy services across a range of farm topologies.

- Introduction to the Service Application Architecture in SharePoint 2013
- Service Application Architecture and Components
- Topologies for Service Applications
- Mapping Service Applications to Your Logical Architecture

Module 3: Planning for Performance and Capacity

This module explains the importance of performance and capacity planning in SharePoint 2013. It also describes how to design a robust and high-performance deployment.

- Principles of Performance Planning
- Designing for Performance
- Principles of Capacity Planning
- Designing for Capacity

Module 4: Designing a Physical Architecture

This module describes the key components of the physical architecture in SharePoint 2013, such as processor, memory, disk, and network access. It reviews how best to design a hardware and software infrastructure for each of the server types that you can deploy in a SharePoint farm

- Designing Physical Components for SharePoint Deployments
- Designing Supporting Components for SharePoint Deployments
- SharePoint Farm Topologies
- Mapping a Logical Architecture Design to a Physical Architecture Design

Module 5: Designing a Security Plan

This module describes the security architecture of SharePoint 2013 and the considerations that you must include in your security planning. These considerations include management of security accounts, management of users and groups, and the reasons why you should implement secure transport protocols.

- Designing to Secure SharePoint 2013
- Planning for Service Accounts
- Planning Security for Users and Groups

Module 6: Planning Authentication

This module discusses the available authentication options for SharePoint 2013 and describes how to plan for these in the new, claims-based security architecture.

- Overview of Authentication
- Introduction to Claims-based Authentication
- Selecting Authentication Methods

Module 7: Planning Managed Metadata

This module describes the function of managed metadata and explains how you can best use the Managed Metadata Service to deliver business benefits.

- Metadata in SharePoint 2013
- Overview of Content Types
- Mapping Managed Metadata to Business Requirements

Module 8: Planning Social Computing

This module explains how SharePoint 2013 can deliver social computing services to an organization. It focuses particularly on the planning that you require to deploy the User Profile Service to maximize social computing benefits.

- Overview of Social Computing
- Planning for Social Computing Functionality in SharePoint 2013
- Planning for the User Profile Service

Module 9: Designing an Enterprise Search Strategy

This module describes the architectures and topologies that are available when you plan to deploy enterprise search in your organization. This includes discussions about both SharePoint 2013 search and Microsoft FAST Search Server 2013 for SharePoint.

- Overview of SharePoint 2013 Search Architecture
- Search Topologies in SharePoint 2013
- Capacity and Performance Planning for Search
- Mapping Business Requirements to Search Design

Module 10: Planning Enterprise Content Management

This module explains how the core ECM functionality in SharePoint 2013 may influence your document and records management design. It also focuses on the planning for enterprise Web content management.

- Overview of Enterprise Content Management
- Planning Tasks for Content Management
- Planning Features and Policies for Content Management
- Planning Web Content Management

Module 11: Planning a SharePoint 2013 Implementation of a Business Intelligence Strategy

This module explains how you can integrate BI functionality in SharePoint 2013 into an overall enterprise BI strategy.

- Overview of Business Intelligence Principles
- Planning Data Access by Using BCS
- Planning SharePoint 2013 Business Intelligence Solutions
- Planning for Reporting and Presentation

Module 12: Developing a Plan for Governance

This module describes the concepts that are associated with corporate governance for SharePoint 2013. Based on this knowledge, the module helps you to plan for governance in a SharePoint 2013 farm.

- Overview of Governance
- Key Elements of a Governance Plan
- Planning for Governance in SharePoint Server 2013
- Governance Implementation Features and Policies in SharePoint Server 2013

Module 13: Designing a Maintenance and Monitoring Plan

This module describes the essential principles of maintenance and monitoring and maps these against the functionality that is available in SharePoint 2013. It then uses this framework to identify how best to develop a maintenance and monitoring plan for SharePoint 2013.

- Principles of Maintenance and Monitoring
- Creating a Maintenance Plan for SharePoint 2013
- Creating a Monitoring Plan for SharePoint 2013
- Considerations for the Maintenance and Monitoring of Associated Technologies

Module 14: Planning Business Continuity

This module describes the components of an effective business continuity plan. It also explains how to map functionality and components in SharePoint 2013 against business requirements for different business continuity metrics.

- Overview of Business Continuity Management
- Developing a Business Continuity Plan for SharePoint Server 2013
- Creating a Backup and Restore Plan for SharePoint Server 2013

Module 15: Planning for Upgrade to SharePoint 2013

This module reviews the options for performing an upgrade to SharePoint 2013 from a range of previous versions. It also outlines the milestones that are necessary to develop a successful upgrade plan.

- Identifying Upgrade Scenarios
- Planning Your Upgrade
- Upgrade Considerations

Module 16: Planning for SharePoint Online

This module describes the key differences between an on-premise deployment of SharePoint 2013, and SharePoint Online. This section also outlines topics of administration as it relates to planning for SPO, as well as planning for hybrid deployments of both SharePoint 2013 and SharePoint Online.

- SharePoint Online Planning
- Planning for Administration of SharePoint Online
- Hybrid Deployments
- Deployments of both SharePoint Online and an on-premise deployment of SharePoint 2013.

Learn Academically, Do Professionally